

# MCKENZIE

**Tunnel Dryer  
1595 Square Feet**

**MADE IN  
THE USA**



**[www.dryer.com](http://www.dryer.com)**  
**Commercial Dehydrator Systems, LLC**

# MCKENZIE

The secret to our CDS dryers simply entails the powerful movement of heated air over your product. With a 1.3 million BTU burner and a 15-horsepower circulating fan the McKenzie lets you precisely adjust and manage humidity. Drying with a CDS dehydrator is faster than drying with our competitor's machines. It's also more energy-efficient, and gives you better results.

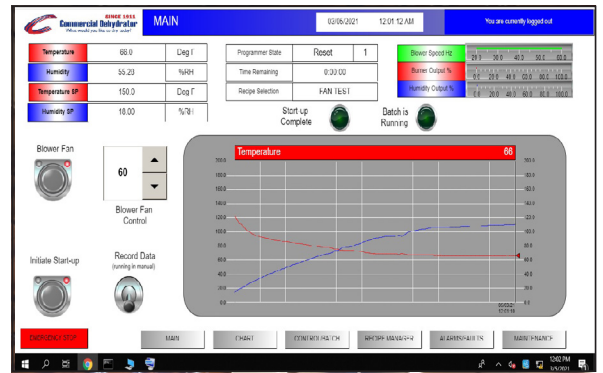
## FEATURES

- High-velocity 15 HP fan with variable speeds
- LED displays of real-time temperature with set-point control
- Automated Humidity Control System
- 1.3 million BTU gas burner (Nat. Gas, LPG Propane or Butane/Propane mix)
- Double-wall insulated to prevent heat loss
- Multiple mobile carts for trays
- Capable of drying a wide range of products

The McKenzie tunnel dehydrator is the most powerful tray-and-cart tunnel dryer of its size and is an ideal fit for your growing business.

## EXPANDABLE

The McKenzie grows as your business grows. With minimal additional investment, the McKenzie can triple in size, expanding from 1,595 to 4,785 square feet of drying space.



Cost to run per hour	Cost to run per day	Cost per sq./foot/per day
<b>\$11.50</b>	<b>\$276</b>	<b>.17¢</b>

Costs partially based on Eugene, OR electrical costs (12 cents per kilowatt hour, which is close to the national average).

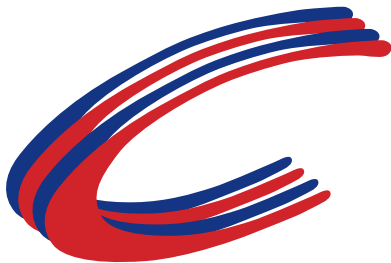
**DIMENSIONS (LxWxH): 17'6" x 5'1" x 12' 2"**  
(5.33M x 1.55M x 3.71M)

**CAPACITY:** 1595 sq. ft. drying space

**WEIGHT:** 15,900 lbs (6363.7 kg)

**ELEC.:** 3 phase, 240/360/480V

**CONSTRUCTION:** Stainless steel, double wall insulated design



**SINCE 1911**  
**Commercial Dehydrator**

[dryer.com](http://dryer.com) • [dehydrator.com](http://dehydrator.com) • (800) 369-4283

